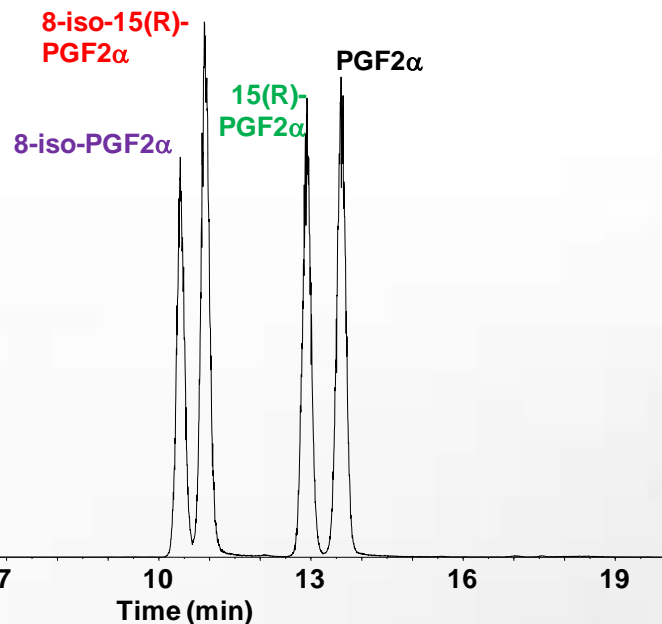


Assay of stereoisomeric F₂-isoprostanes and prostaglandins by LCMS-MRM for urine and blood samples

- Analytes available: 8-iso-PGF_{2α}, 8-iso-15(R)-PGF_{2α}, 15(R)-PGF_{2α}
- The assay is accurate and precise for simultaneous quantification of each analyte over a linear dynamic range of 0.05-50 ng/mL
- Used for analysis of urine and plasma
- Based on stable isotope dilution methodology
- Samples should be frozen and stored at -80°C after initial collection and sent to the lab over dry ice



Prasain JK, Sweeney S, Arabshahi A, Moore DR, Barnes S. Quantification of isomeric F₂-isoprostanes in urine and plasma by liquid chromatography tandem mass spectrometry (LC-MS/MS) analysis. *Journal of Chromatography B – Biomedical Applications*, 913/914: 161-168, 2013. PMID: 23314354

Contact Information:

UAB-UCSD O'Brien Core Center
Anupam Agarwal, MD, Director
<http://www.obrienaki.org/>

Core Laboratory: Stephen Barnes
sbarnes@uab.edu
Tel: (205) 934-7117/(205) 934-2338

TMPL Website:
<http://www.uab.edu/proteomics/massspec/>